

PHILIP O'REILLY

newhomesplus

Mortgages & Financial Advice



www.philiporeilly.com

***Laghtagoona,
Corofin, Co. Clare
Phase Five in This Exclusive Development of
Three / Four Bedroom Homes***

For Info on Mortgages Please Call Emer O'Reilly / Ann Marie Leyden on 065-68-44448

Builders: Cronan Nagle Construction Ltd



**These architect designed homes will offer spacious, well laid out living accommodation and will be finished to the highest standards.
The homes are situated just five minutes walk to the village of Corofin and it's many amenities**

Showhouse Now Open Sundays 12 - 4pm

Philip O'Reilly & Co.Ltd. for themselves and for the vendors or lessors of this property whose agents they are, give notice that (i) the particulars are set out as a proof for the guidance of intending purchasers or lessors, and do not constitute, nor constitute part of an offer or contract; (ii) All description, dimensions, references and necessary permissions for use and occupation and other details are given in good faith and are believed to be correct, but any intending purchasers or tenants should not rely on them as statements or representation of fact but satisfy themselves by inspection or otherwise as to the correctness of each item; (iii) No person in the employment of Philip O'Reilly and Company Limited has any authority to make or give any representation or warranty whatever in relation to this property.

22/24 Abbey Street, Ennis, Co.Clare, Ireland.
Tel: 00 353 65 68 44448 Fax: 00 353 65 68 20496 Email: info@philiporeilly.com Web: www.philiporeilly.com
Philip O'Reilly Property Plus are bonded members of the Irish Auctioneers & Valuers Association.



House Type 'A'

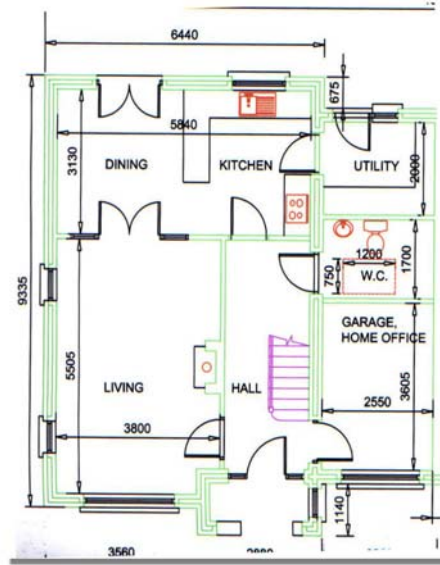
4 Bedroom Semi-Detached



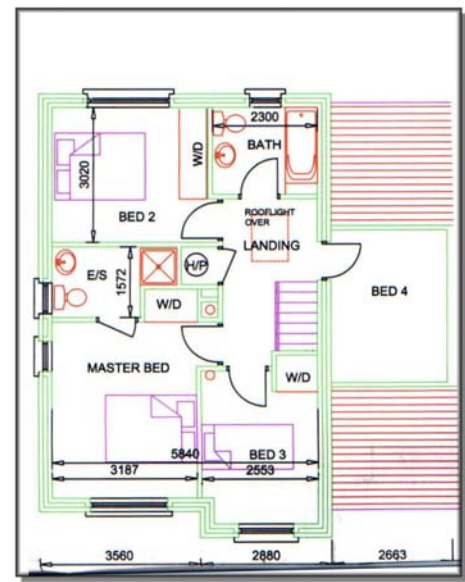
Front Elevation

PRICE: €240,000

Area: 131.97sq/m (1,419.90sq/ft)



Ground Floor



First Floor

House Type 'B'

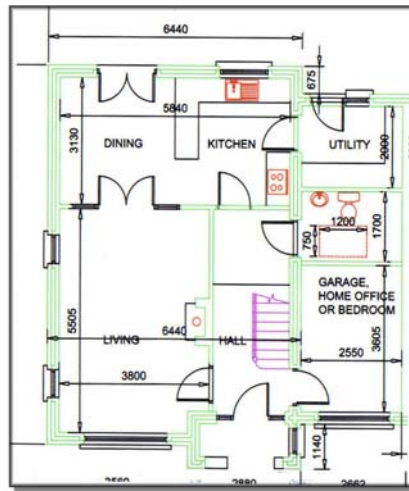
3 Bedroom Semi-Detached



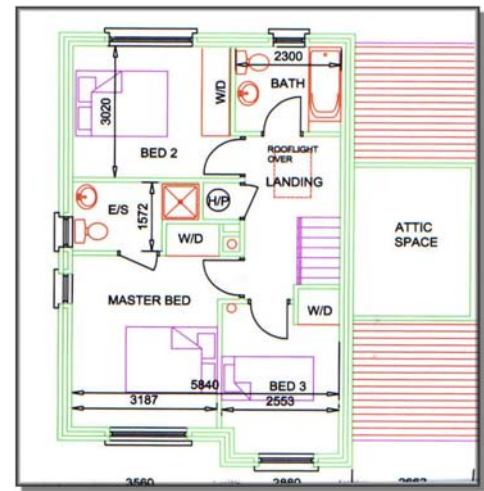
Front Elevation

PRICE: €227,500

Area: 123.3sq/m (1,326.70 sq/ft)



Ground Floor



First Floor

House Type 'C'

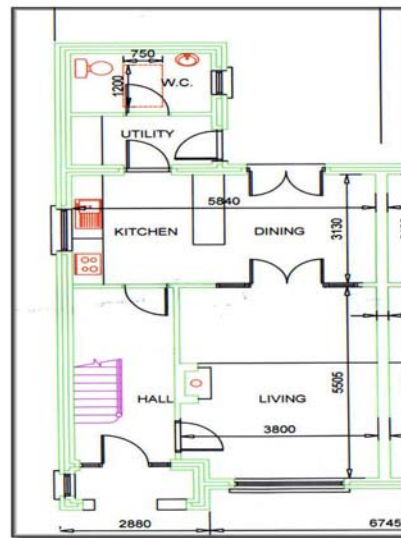
3 Bedroom Semi-Detached



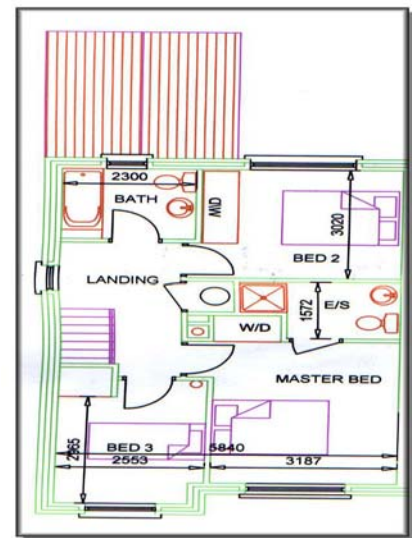
Front Elevation

PRICE: €217,500

Area: 112.26sq/m (1,207.00 sq/ft)



Ground Floor



First Floor

House Type 'D'

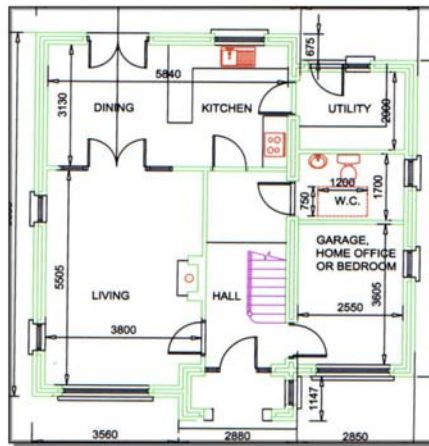
3 Bedroom Detached
(Option 'A')



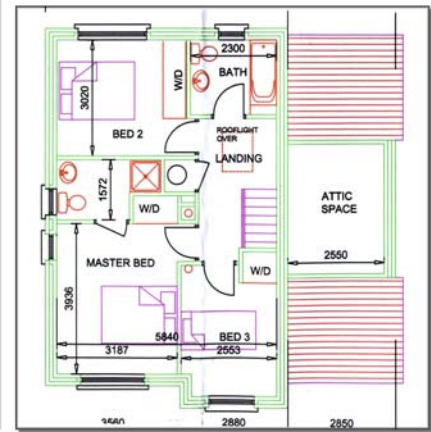
Front Elevation

PRICE: €245,000

Area: 123.32sq/m (1,336.90 sq/ft)



Ground Floor



First Floor

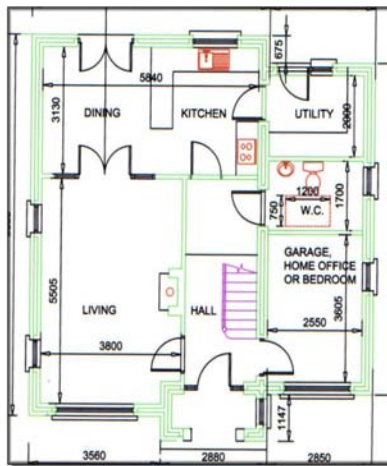
4 Bedroom Detached
Option 'B'



Front Elevation

PRICE: €250,000 B

Area: 131.99sq/m (1,420.20 sq/ft)



Ground Floor



First Floor

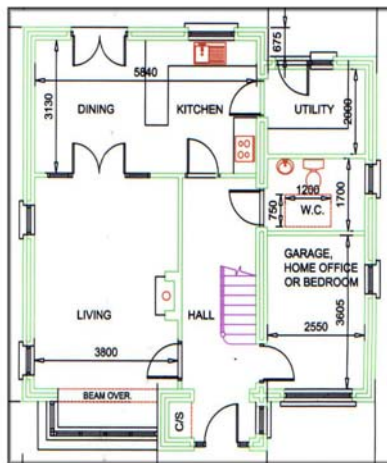
4 Bedroom Detached
Option 'C'



Front Elevation

PRICE: €255,000 C

Area: 133.40sq/m (1,435.38 sq/ft)



Ground Floor



First Floor

Features Include:

- * Concrete Construction
- * Tarmac Drive
- * En-suite Shower Room
- * Open Fireplace

- * Featured Plaster Finishes
- * Heavy Moulded Architrave
- * Ground Floor WC
- * Double Glazed windows

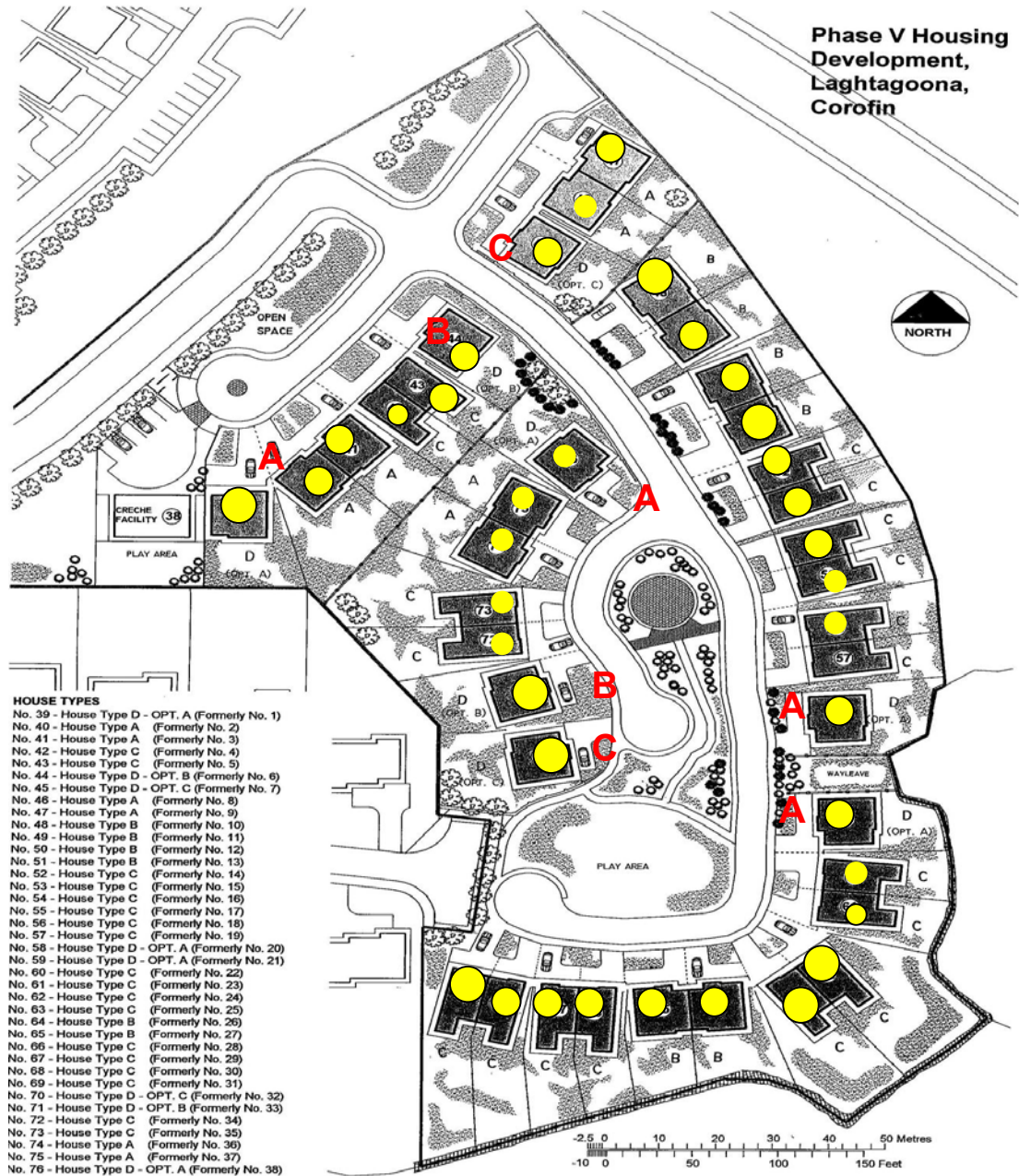
Finance

Home loans are available to prospective purchasers and can be arranged by selling agents.

House Payments

- *Booking deposit €5,000
- *Signing of Contract Balance of 10%
- *Foundation stage payment, as outlined in Contract
- *Roof stage payment, as outlined in Contract
- *Balance on completion

SITE MAP



Viewing Strictly By Appointment With Selling Agents
Ref: 22